

# Repository Information System for the Final Assignment of the South Aceh Polytechnic

Muharratul Mina Rizky<sup>a,1,\*</sup>, Sabrina Ulia Mouna<sup>b,2</sup>, M. Arinal Ihsan<sup>c,3</sup>

<sup>a,b,c</sup> Program Studi Teknik Komputer, Politeknik Aceh Selatan, Kabupaten Aceh Selatan, 23711, Indonesia  
<sup>1</sup> kiky.amiruddin@gmail.com \*, <sup>2</sup> sabrinauliamouna@gmail.com; <sup>3</sup> arynalfrank@gmail.com

## ARTICLE INFO

Article history:  
Accepted

Keywords:  
Repository  
Validation  
Final Assignment

## ABSTRACT

A final assignment repository is a medium or place for storing final assignments and theses in the form of PDF files (Portable Document Format). At the end of each semester, students must receive a final assignment course for the D3 level. In each university, the final assignment system is often different, but most still use the manual method. When a student's thesis trial and final assignment are printed, it is used as a book as proof that they have completed the thesis or final assignment. For the collection of thesis books, students are required to collect them in the library; often, other students look for study references and assignments in the reading room. For that reason, the author's problem is trying to design a website-based final project repository application using the Laravel framework. This application was built to store student final assignments. In this case, students can easily save the final project file. In this application, the reading room admin plays the role of manager of the final assignment file if students who have submitted it validate that the student has collected it. Majoring students can use this application to access applications that can be used as learning tools or references for their final project. A computerized system is expected to provide convenience and produce applications as expected.

Copyright © 2023 Politeknik Aceh Selatan.  
All rights reserved.

## I. Introduction

A repository is a place to store various kinds of programs or applications that have been made in such a way that they can be accessed via the internet. This repository system is very helpful for the academic section in compiling and storing the final assignments of South Aceh Polytechnic students easily [1]. South Aceh Polytechnic students who have completed their final project must submit the results in the form of a hardcopy final project and also a CD containing the final project files (softcopy) to study program staff and library staff for data collection and archiving. Every year, the South Aceh Polytechnic produces quite a number of graduates, so the number of final projects submitted is increasing. The problem is that the submitted final project is stored and compiled in the library filing cabinet. Students who need final assignments must search one by one in the library filing cabinets. Another problem that arises is if, by chance, the required final assignment is being borrowed by another student, then they have to wait until the borrower returns the final assignment. Based on these problems, the author is interested in making a final project entitled "Repository Information System for the Final Assignment of the South Aceh Polytechnic" This repository information system is made to make it easier for students who want to find references when determining the title of the final project. It is hoped that with this repository information system, students who need their final semester assignments first won't have to bother going to the library and borrowing them.



## II. Method

### A. Flowchart Diagram

Flowchart is a chart with certain symbols that describe the sequence of processes in detail and the relationship between a process (instructions) and other processes in a program.

#### 1. Admin Flowchart Diagram

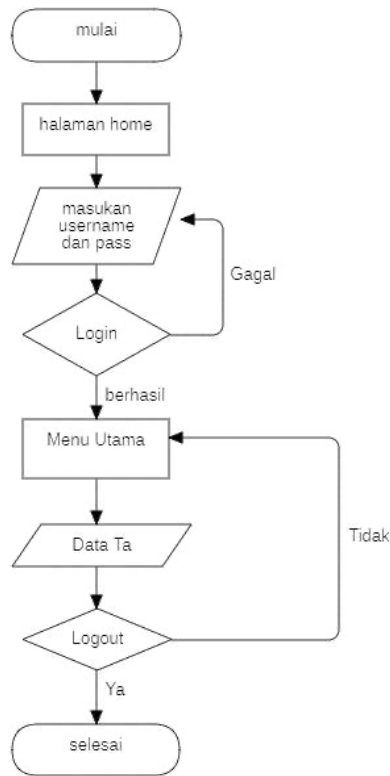


Fig.1. Admin Flowchart

#### 2. User Flowchart Diagram

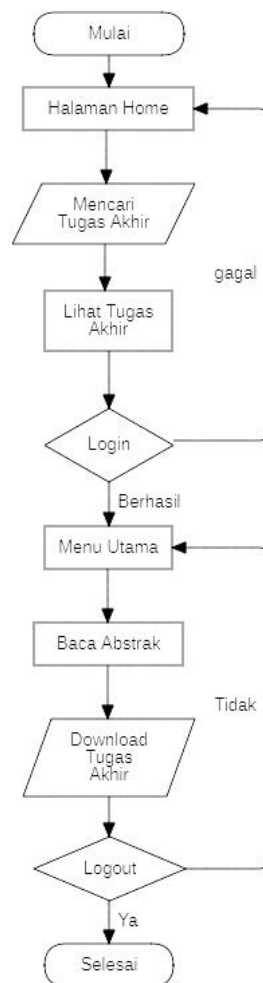


Fig. 2. Flowchart Diagram User

### B. Use Case Diagram

The user can login to the page, the user can see the final project he is looking for, the user can download the final assignment, then the user can log out. In contrast to the admin, the admin can log in, then the admin can process data such as inputting student data, lecturer data or inputting final assignments that have been submitted.

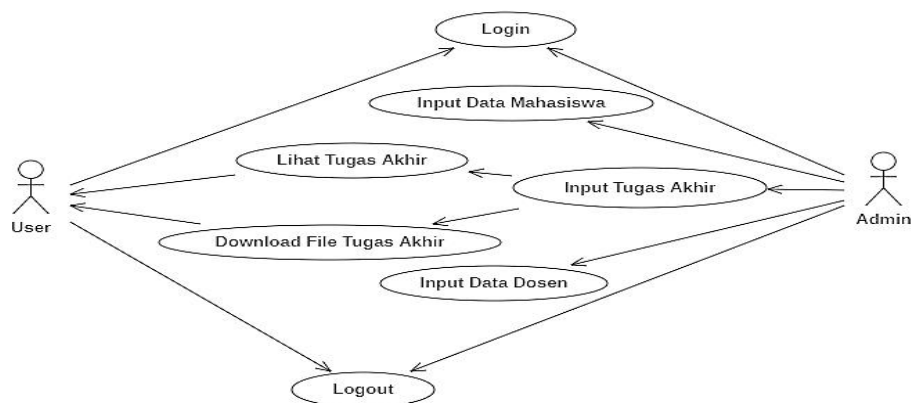


Fig. 3. Use Case Diagram

### C. Home Page's Display

On the dashboard of this home page, users can search for the final assignment of the previous semester by typing the title of the final assignment in the search field, can be seen from the figure below.

Fig. 4. Home Page's Display

### D. Login Page's Display

The figure below shows the design of the login page used by the user. This display is the last step before entering the application system.

Fig. 5. Login Page's Display

### E. Admin Dashboard Page's Display

On the admin dashboard, we can process data, such as entering or updating existing final assignments, can be seen from the figure below.

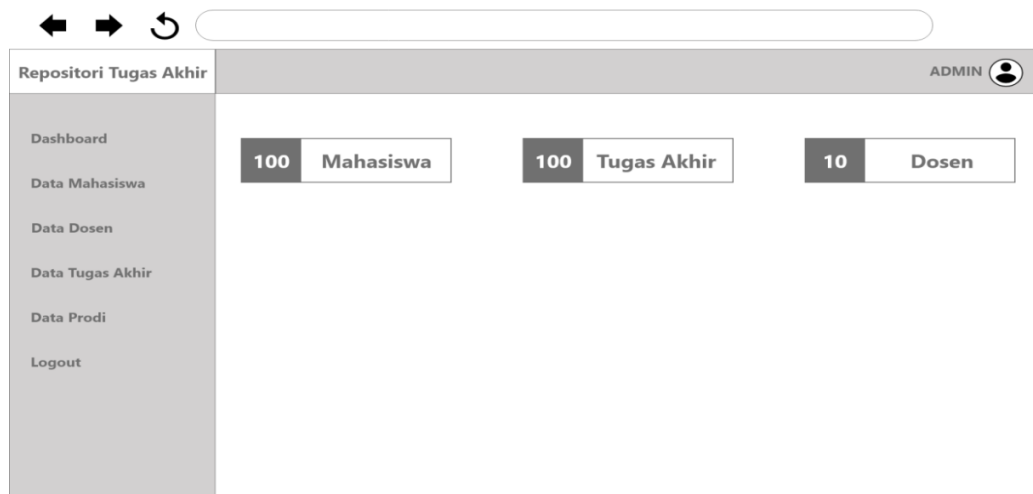


Fig. 6. Admin Dashboard Page's Display

## III. Results and Discussion

### A. Home Page's Implementation

The home page is the initial page when the admin or user enters the web, as shown below.



HIGHLIGHT REPOSITORY  
Fig.7. Home Page's Display

## B. Login Page

The login page is the destination for admins and users to log in. This page is the initial display of the final project repository application; the following is the login page display.



Fig. 8. Login Page

## C. Repository Page's Display

On this page, there is the final project you want to find. The following is the display of the final project repository page.



Fig.9. Repository Page's Display

#### D. Admin Data Profiles Display

On this page is the admin profile data page. The following shows the admin profile data.

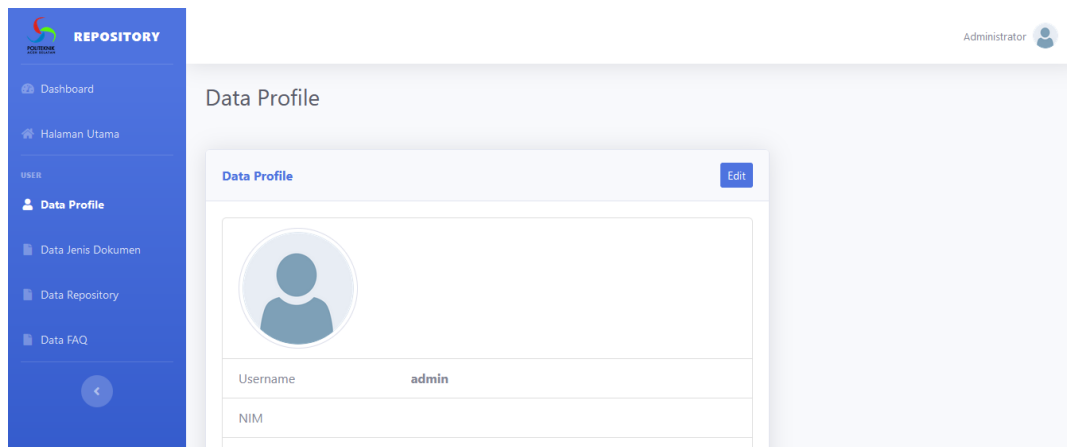


Fig. 10. Admin Data Profiles Display

#### E. Document Type Data Display

The following page is the input document type data page, and the following is the document type data display.

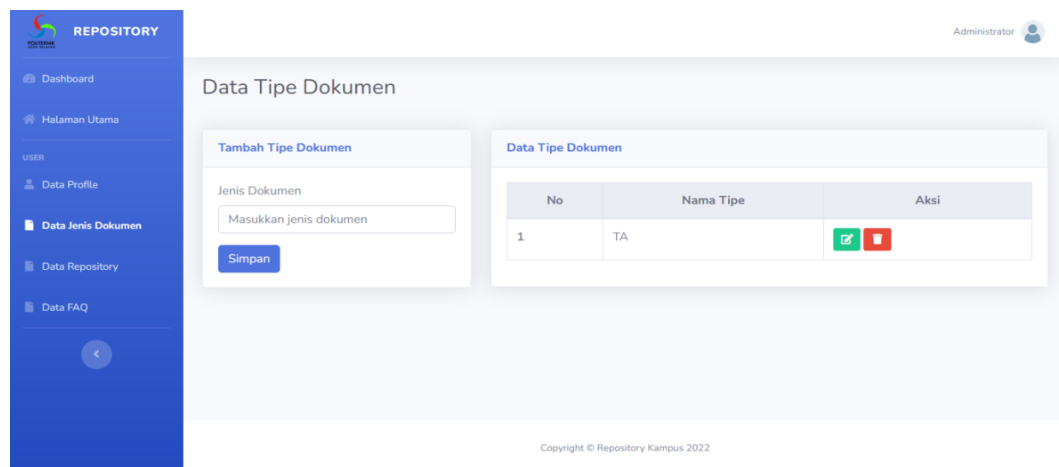


Fig. 11. Documents Data Display

### F. Repository Data Display

The following is the display of the repository data entered by the admin. The following is a display of the repository data.

No	Judul Dokumen	Author	Jenis Dokumen	Tanggal Terbit	Abstrak	Pembimbing 1	Pembimbing 2	Aksi
1	Pantai Bali Indonesia	Admin	TA	Jumat, 7 Oktober 2022	Qwerty	Nelly Safitri	Rio Darmawan	[Icons for edit, view, delete]
2	Sistem Informasi Pembayaran Pajak Hotel pada Badan Pengelolaan Keuangan Daerah (BPKD)	Admin	TA	Senin, 10 Oktober 2022	Kantor BPKD Aceh Selatan merupakan kanto...	T.Sukma Archiaradi	Sera Delta Tanjung	[Icons for edit, view, delete]

Fig. 12. Repository Data Display

### G. FAQ Display

Here is the FAQ data display.

Fig. 13. FAQ Display



#### IV. Conclusions

The conclusions from all the results and reports from the application are as follows:

1. This system will aid and facilitate the academic section of South Aceh Polytechnic in recording and storing final assignments, as well as making it easier for South Aceh Polytechnic students to locate their final assignments.
2. This application was created so that the South Aceh Polytechnic has a final assignment repository information system.

#### References

- [1] Nugroho, Sistem Informai Manajemen administrasi barang pada Dinas Koperasi Usaha Kecil dan Menengah. Program Studi Sistem Informasi Fakultas Sains Dan Teknologi Universita Islam Negeri Raden Fatah Palembang, Artikel Diyah Retnowati, Palembang, 2017.
- [2] Wiyarsih, Pemanfaatan Koleksi Repository Perpustakaan Fakultas MIPA UGM Menggunakan EPrints. *Berkala Ilmu Perpustakaan dan Informasi - Volume XI Nomor 2*, Vol. 11 No. 2, 50-61. 2015.
- [3] Hasugian, J, Internal Repository pada Perguruan Tinggi. *www.repository.usu.ac.id*, 1-14. 2018.
- [4] F. Teknik, "Pedoman Pelaksanaan TA, Fak. Teknik Unram," 2014.
- [5] Sejarah Politeknik Aceh Selatan, Politeknik Aceh Selatan, Tapaktuan, Kabupaten Aceh selatan, Indonesia. [Online]. Available:<https://ac.id/>.
- [6] Mara Destiningrum, Qadhli JafarAdrian, *Sistem Informasi Penjadwalan Dokter Berbassis Web Dengan Menggunakan Framework Codeigniter (Studi Kasus: Rumah Sakit Yukum Medical Centre)*, Jurnal TEKNOINFO, Vol. 11, No. 2, 2017.
- [7] Bhirawa Anoraga Nandari, Sukadi, *Pembuatan Website Portal Berita Desa Jetis Lor*, Indonesian Journal on Networking and Security - Volume 3 No 3 Juli – 2014.01
- [8] Qalbi Illyan Ainun. Konsep Dasar Basis Data. Samarinda: Univeritas Mulawarman. 2014.
- [9] Hidayatullah, P. &. *Pemrograman Web Edisi Revisi*. Bandung: Informatika Bandung. 2017.
- [10] Wardana. *Menjadi Master PHP dengan Framework CodeIgniter*. Jakarta: PT Elex Media Komputindo.
- [11] Wahyu widodo, *Membangun Web Super Cepat Dengan Codeigniter GroceryCRUD dan TankAuth*, Indonesia. 2013.
- [12] Bertha, Sidik (2014:72), Xampp (X/Windows/Linux) Apache Mysql PHP dan Perl Server Web PHP dan Database Mysql.
- [13] Roni Habibi, Alwan Suryansah, *Aplikasi Prediksi Jumlah Kebutuhan Perusahaan*, Bandung: Kreatif Industri Nusantara. 2020.